

SPECIFICATION SHEET

Hand Protection



KOSTO
BUILT STRONG • BÂTI SOLIDE

Full-Grain Leather Gloves With Cotton Back

MGG236

Description

These Kosto work gloves are made of split leather and cotton. They feature additional layering in high-wear areas for lasting protection.

The fingertips of this glove are reinforced and the rigid safety cuff provides wrist protection and easy on/off with the snug-fitting elastic at wrist to increased comfort.

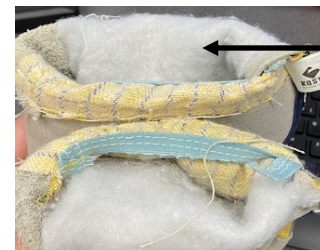
These work gloves also feature leather bands at the knuckles, making them a reliable and comfortable option for protecting your hands from injury.

Material

Split Leather
Cotton
Lightweight fabric lining

Size

S to XL



Inside lining on palm and fingers



PROTECTION • RELIABILITY • QUALITY

WWW.SPI.COM

SPECIFICATION SHEET

Hand Protection



KOSTO
BUILT STRONG • BÂTI SOLIDE

Related Products

Split leather with Cotton
MGG001
Long palm



Leather with Cotton
MGG220
3 pieces with lined palm



Split leather with Cotton
MGG242
3 pieces with lined palm



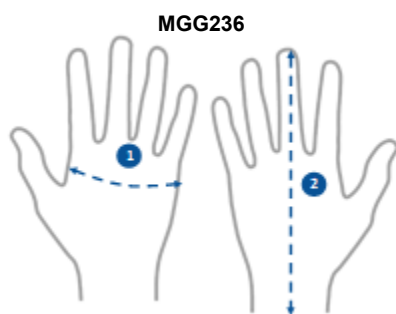
Care and washing instructions

A good way to keep leather gloves longer is to clean them regularly.

- Clean with a cloth and a mild soap that contains natural fats (e.g. Marseille soap)
- Clean with a soft, damp cloth, removing any dirt
- Air dry only
- Do not clean with hard soap as it removes the natural oils from the leather and makes it stiffer.



Sizing Chart



Size Kosto *			P	M	G	TG
1	Width (hand)	cm	12	12.5	12.5	13
		po / in	4.7	4.9	4.9	5.1
2	Length (glove)	cm	17	18	19	20
		po / in	6.7	7	7.5	7.9

* The measurements are those of the product.

* A fitting is always recommended.